



AUCTION

LEADING THE INDUSTRY SINCE 1945

Tuesday – September 4, 2018 – 6:00 PM

Fixer-Upper Home On 16.8 Acres

With Nature, Wildlife And Creek In High Recreational Area
Geneva Twp. – Ashtabula Co., OH

Absolute auction, all sells to the highest bidder on location:

6300 W. Maple Rd., Geneva, OH 44041

Directions: From SR 534 north of Geneva and south of Geneva on the Lake to Maple Rd. and west to auction. Or from N. Ridge Rd. W (RT 20) to Padanarum Rd. north to Maple Rd. and west to auction. Watch for KIKO signs.

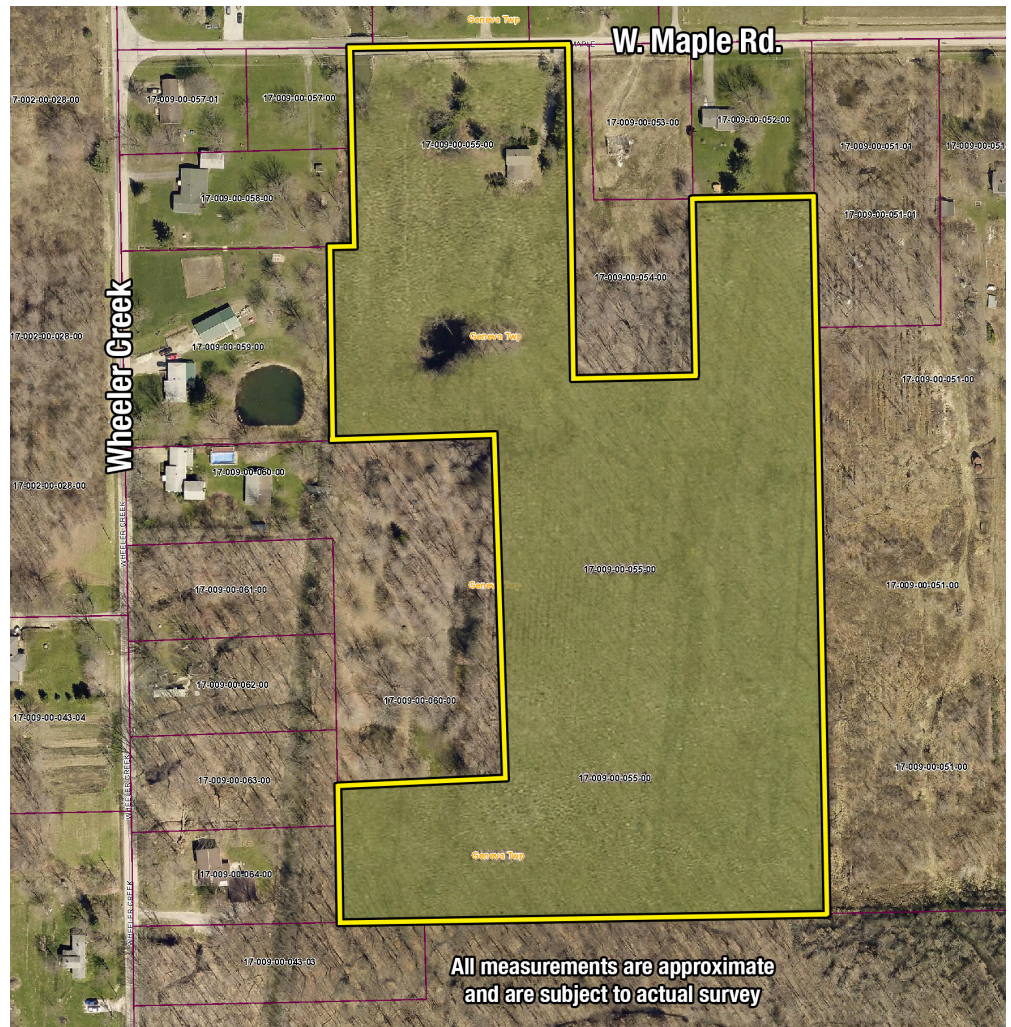


Information is believed to be accurate but not guaranteed.



330.455.9357 • kikoauctions.com





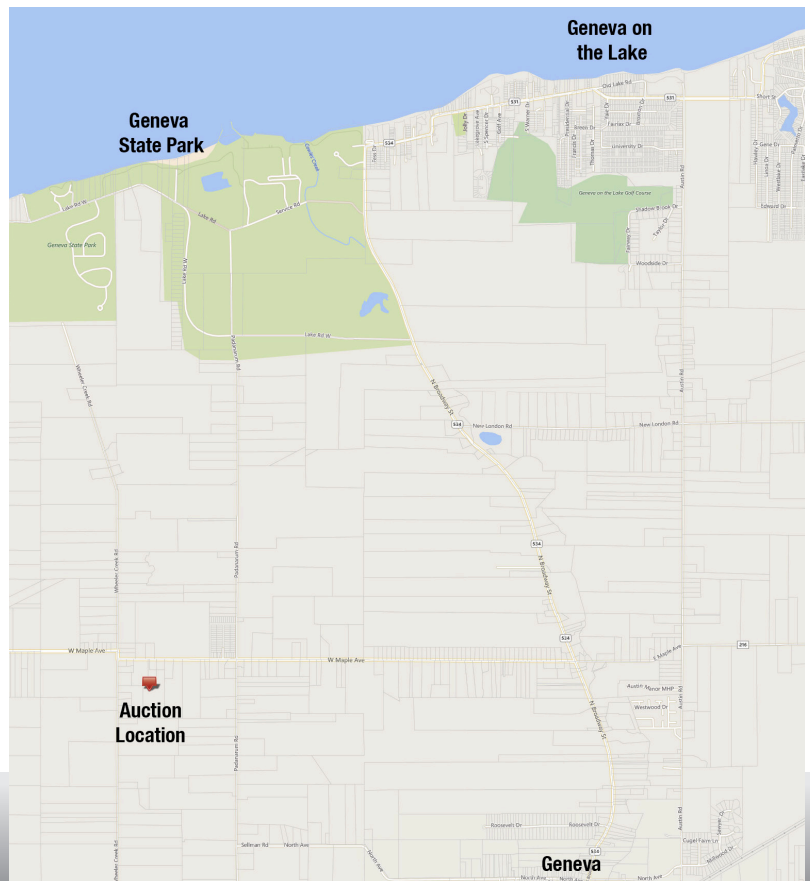
REAL ESTATE: Handyman vinyl-sided home features living room, kitchen, full bath, 2 bedrooms, first floor laundry. 2 bedrooms & half bath up. Full basement. Oil F/A heat. Situated on 16.8 acres recreation land w/ nature & wildlife. Wheeler Creek runs along west side of the property. Approx. 2 mi. to Geneva State Park & Geneva on the Lake boat harbor. Great for hunting & fishing.

TERMS ON REAL ESTATE: 15% down auction day, balance due at closing. A 10% buyer's premium will be added to the highest bid to establish the purchase price, which goes to the seller. Any desired inspections must be made prior to bidding. All information contained herein was derived from sources believed to be correct. Information is believed to be accurate but not guaranteed.

AUCTION BY ORDER OF: David E. and Elvesta M. Miller



Auctioneer/Realtor®
JOSEPH F. GORDON
 330-805-7627
 joegordon@kikocompany.com



330.455.9357 • kikoauctions.com

